



TOXIC
SUPPRESSION

EXT-62U

NFPA 1851 62lb PPE Extractor Solution



PRE-PROGRAMMED TO MEET NFPA 1851 REQUIREMENTS

The first extractor package on the market to offer out of the box pre-programmed NFPA 1851 Compliance



PRE-WIRED TWO PUMP CHEMICAL INJECTION SYSTEM

The latest edition requirements of NFPA 1851 require more than using detergent. Each solution comes standard with a two-pump injection system so both detergent and sanitizer can be automated



ISP PROVEN DETERGENT AND SANITIZER

Safety Suds Bunker Gear Detergent is used by ISP's and major metro fire departments across the US.

BacStop OPL is an EPA rated fabric sanitizer that leaves a bacteriostatic finish that can last for up to 6 months

**FREE
SHIPPING**

Includes:

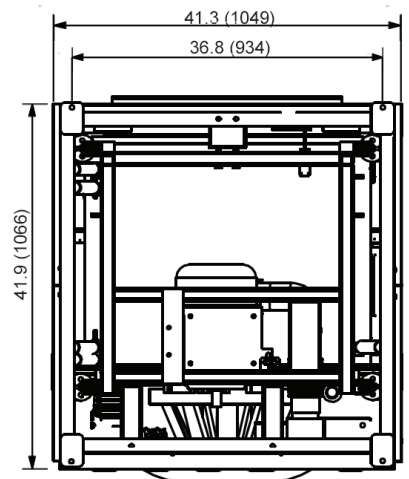
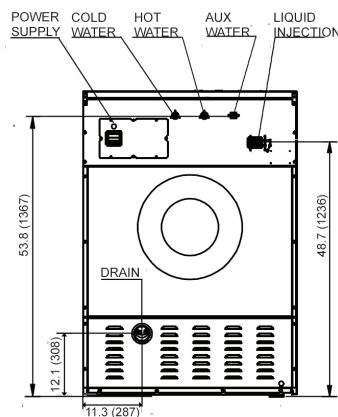
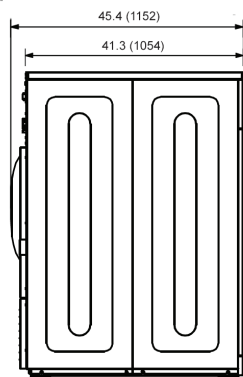
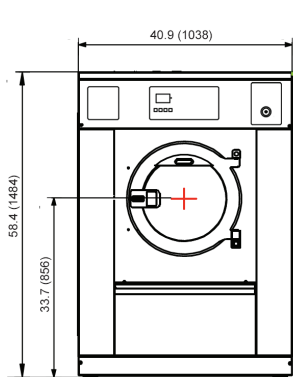
62lb Soft Mount PPE Extractor and Base
Pre-wired two-pump chemical injector and hose package
5 Gallon Pail of Safety Suds Bunker Gear Detergent
5 Gallon Pail of BacStop OPL EPA Rated Fabric Sanitizer

www.**TOXICSUPPRESSION**.com



MOTOR	
Size – HP (KW)	3.0 (2.2)
CAPACITY	
Cylinder Volume – cu. ft. (liters)	8.8 (251.3)
Cylinder Diameter – in. (mm)	30.5 (774)
Cylinder Depth – in. (mm)	21.0 (534)
Dry Load Capacity – lb. (kg)	62 (28.1)
OPERATING SPEED & EXTRACT FORCE*	
Washing Speed (RPM)	45-50
Maximum Extract Force (G-force)	277
Maximum Extract Speed (RPM)	800
CONNECTIVITY	
USB Programmability	Yes
DIMENSIONS	
Depth – in. (mm)	45.4 (1152)
Width – in. (mm)	40.9 (1038)
Height – in. (mm)	58.4 (1484)
CRATED DIMENSIONS	
Depth – in. (mm)	48.0 (1220)
Width – in. (mm)	43.4 (1102)
Height – in. (mm)	63.6 (1615)
APPROXIMATE WEIGHT	
Uncrated – lb. (kg)	1433.2 (650)
Crated – lb. (kg)	1653.5 (750)
ELECTRICAL CONNECTION OPTIONS (VOLTS/Hz/PHASE)	
208 – 240V / 50 – 60HZ / 1PH (no electrical heating)	Yes
WATER HEATING OPTIONS	
Hot / Cold Water Connections Only	Yes
WATER, CHEMICAL DISPENSING, DRAINS	
Number of Water Inlets	3
Inlet Sizes – in. (mm)	1 (25.4)
Manual Dispenser Compartments, Number	4
External Chemical Connections, Number	5
Dump Valve Drain Size – in. (mm)	3 (76.2)
INSTALLATION RECOMMENDATIONS	
Recommended Clearance Between Machines - in (mm)	1.5 (40)
Recommended Clearance in front of Machines - in (mm)	39.4 (1000)
Recommended Clearance Behind Machines - in (mm)	31.5 (800)

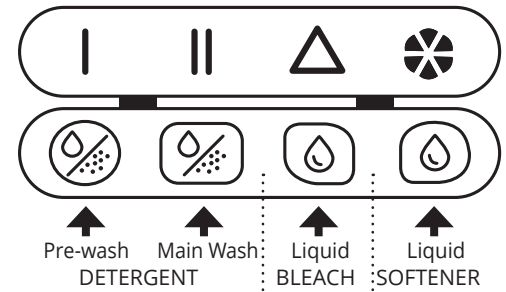
*Units are pre-programmed per NFPA 1851 requirements



REAR

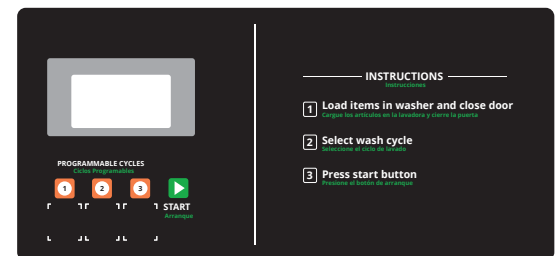
EXT-62U

MANUAL DETERGENT DISPENSER



Convenient and easy to use

SIMPLE DIGITAL CONTROLLER



Easy to use control panel –
bi-lingual instructions

See specific instructions for proper installation. Because of continuous product improvement, Unity Laundry Systems reserves the right to change specifications without notice.

®/™ ©2022 Unity Laundry Systems. All rights reserved.



TOXIC
SUPPRESSION